

Take My Hand....

...Look..
...Listen..
...Touch..
...Smell...

Winding trails, the moving waters of the Ottawa River, scenic overlooks, beautiful drifts of seasonal wildflowers and much more are waiting for you.

start
AT PARK
ENTRANCE



At the head of the trail, we see a large mulberry tree. Although there is a large hole in the side, a look up will convince us that this tree is still alive and healthy. Hollow trees provide homes for many different animals. As you walk, look for other possible homes.

Turn left and follow the trail to the overlook.

As you go down the hill, you will notice that much of the area is open to the sun, providing a vibrant healthy meadow.

Look to the top of the hill and you will see a gazebo. In winter the resting meadow is used for sledding, with a pit provided to build a warm fire.

Many of the trees and shrubs you see are "pioneers", trees that are the first to establish themselves in open areas. They are sunloving and fast growing but will be shaded out as taller trees come in.

As you explore the park in different seasons, you will see different things. Remember, though, that nature does not always follow our human calendar. Spring does not flow seamlessly into summer, then autumn. Nature can be untidy, with spring flowers lingering into summer and fall flowers popping up early.

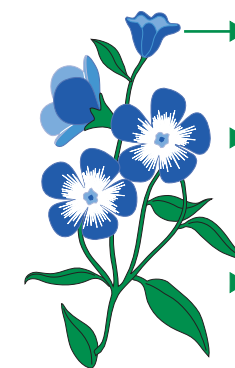


Harroun
Community Park

TAKE NOTHING BUT
PICTURES.
LEAVE NOTHING BUT
FOOTPRINTS.

WILDFLOWERS TO LOOK FOR

Spring wildflowers survive by flowering earlier than other plants. Leaves are not put on the trees yet so there is more sunlight. These spring plants have a strength that is not reflected in their often delicate appearance. Some establish themselves so well in spring that they may bloom most of the summer. Others go through an accelerated spurt of growth, flower, produce seeds, then die back until next year. Look for...



- ▶ Forget-me-not - May-Sept.
Tiny, light blue flowers, yellow center
- ▶ Blue Flag or Wild Iris - May-June
Violet-blue showy flowers, yellow throat. Leaves swordlike.
- ▶ Dame's Rocket - May-June
Purple, pink or white. 4 petals. Long skinny seedpod.

As spring deepens into summer, other plants take center stage. The increase of solar power and the wet nature of the park's meadow area open the way for early to midsummer flowers such as:

- ▶ Jewelweed or Touch-me-not - June-Oct.
Delicate hanging flowers. Yellow or orange.
- ▶ Purple Loosestrife - June-Sept.
Purple-pink spikes of flowers.
- ▶ Indian Cup - July-Sept.
Square stem. Yellow, daisylike flower.
- ▶ Bergamot - July-Aug.
Square stem. Lavender, tubular flowers.



Ironweed



Dame's Rocket



Bergamot

Late Summer and autumn see fewer species, but some will continue blooming until frost and sometimes beyond:

- ▶ **Ironwood** - July-Sept.
Vivid, shaggy purple flowers. Purplish stem.
- ▶ **Goldenrods** - Aug.-Oct.
Tiny bright yellow flowers in clusters.
- ▶ **New England Aster** - Sept.-Oct.
Daisylike. Bright purple with yellow center.

When frost finally comes to stay, many of the plants die back completely, disappearing until the next growing season. Others have berries and seeds that may linger on throughout winter — providing food for wildlife, and pleasing our eyes with their simple unadorned beauty.




trees to look for:

Box Elder	Black Locust
Mulberry	Norway Maple
Green Ash	Red Maple
Black Cherry	American Elm
Dogwood	Eastern Cottonwood
Black Willow	Honeylocust
Siberian Elm	Callery Pear
Sycamore	Silver Maple
Ailanthus	Bitternut Hickory
Black Walnut	Ohio Buckeye
Staghorn Sumac	


WIDlife TO LOOK FOR

When you walk in Harroun Park during the winter, look for signs of wildlife that were less visible in the summer when heavy vegetation provided maximum cover — trails leading across our human path, great balls of leaves that serves as squirrel homes, old birds nest that were unnoticed in warmer weather. It's always fun to look for tracks in the snow. What made them? Where are they going? What were they doing?

Some of our more common tracks are:



- ▶ **Squirrel**
- ▶ **Rabbit**
- ▶ **Deer**
- ▶ **Dog/Fox**
- ▶ **Housecat**



birds to listen for:

- ▶ **Robin** - cheer-up, cheer, cheer, cheer up.
- ▶ **Cardinal** - birdie, birdie, birdie, What-cheer, what-cheer.
- ▶ **Catbird** - merow (a harsh catlike sound).
- ▶ **Chickadee** - chick-a-dee-dee-dee. Fee-be.
- ▶ **Blue Jay** - jay, jay, jay.

Sit for awhile at the overlook. Although civilization is not far away, this spot is peaceful and calm. Looking to the left you see Ten Mile Creek, to the right the waters become the Ottawa River. Close your eyes and listen to the soothing sound of moving water. What else do you hear?

There are many more things to be discovered here than can be covered in this brochure or in one walk. Come back. Often. Look with awakened eyes and you will truly begin to know Harroun Park.

HARROUN COMMUNITY PARK

▶ Park Hours - 9 am to sunset daily.

VISITORS PLEASE NOTE

Alcoholic beverages are prohibited.
NO Vehicles, Snowmobiles, Dirt Bikes or ATV's Under Penalty of Law.

- ▶ Pets on leash.
 - ▶ Dispose of refuse in containers.
 - ▶ Removal or picking of plants and flowers is PROHIBITED.
 - ▶ Enjoy wildlife from a distance.
 - ▶ Fires only in Gazebo fire pit during winter season.
- We ask your cooperation in maintaining the tranquil surroundings in Harroun Community Park.



City Of Sylvania

DIVISION OF PARKS & FORESTRY
8425 Sylvania Metamora Rd.
Sylvania, Ohio 43560
(419) 885-8993



City Of Sylvania HARROUN COMMUNITY PARK

- ▶ **Wildflowers** ▶ **Trees**
- ▶ **birds** ▶ **wildlife**
- ▶ **features**



(female) (male)
Northern Cardinal

YOU ARE INVITED To Take a SELF GUIDED TOUR

Come and explore Harroun Park...
a gentle oasis in the midst
of the rush of everyday life.